

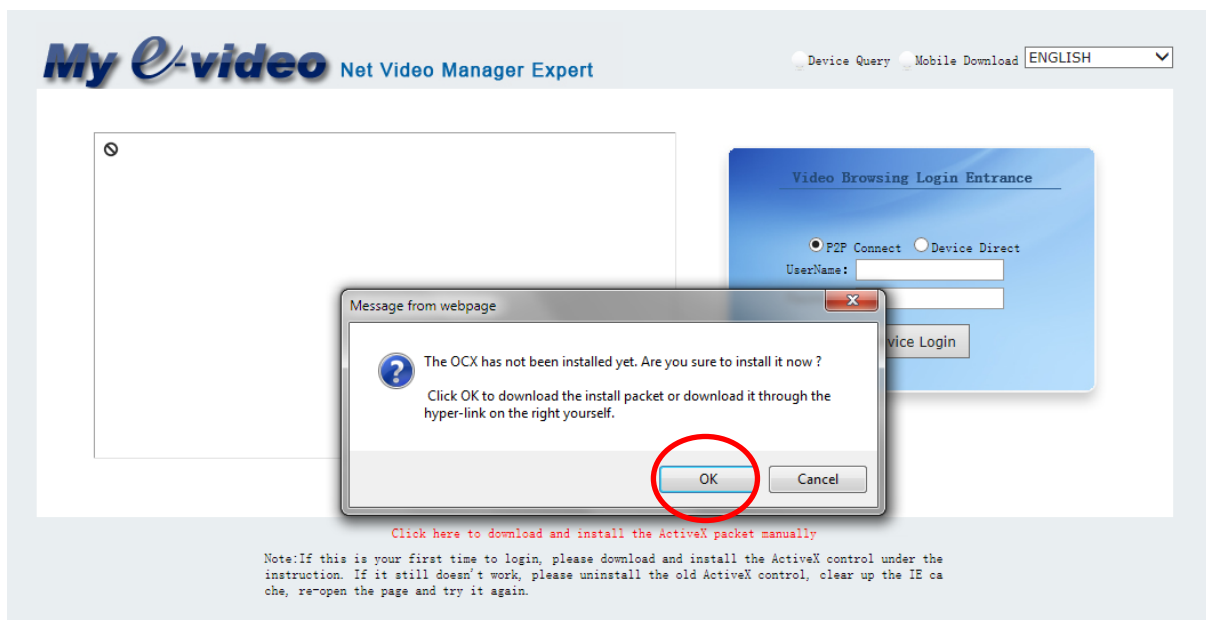
How to Access CCTV Remotely – PC

Note: This method will only work using Internet Explorer. Instructions are based on using Windows 7 PC.

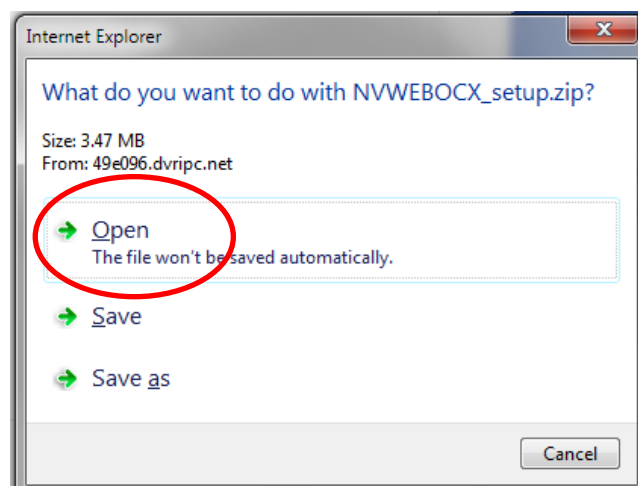
1. Using Internet Explorer, type the following into the address bar, followed by hitting ENTER: “49e096.dvripc.net” (shown below)



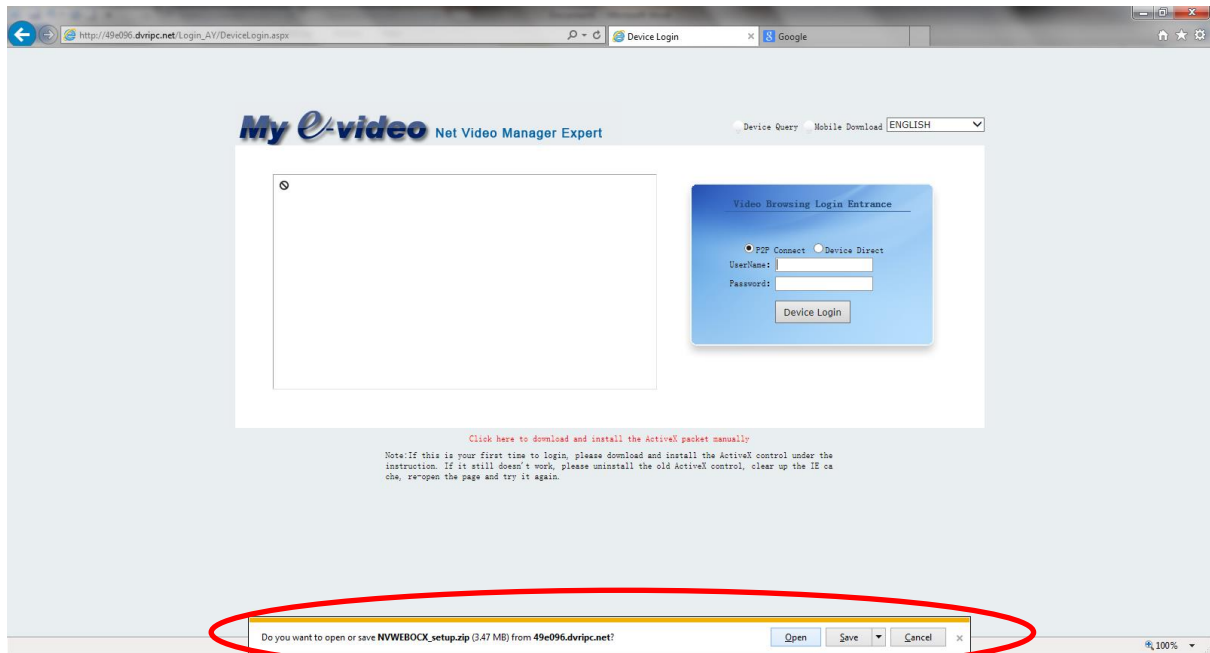
2. This should take you to the following page, where a notification may appear:



Click “OK” on the notification, this will then ask to download “NVWEBOCX_setup.zip”. When the notification appears click “OPEN” as below:

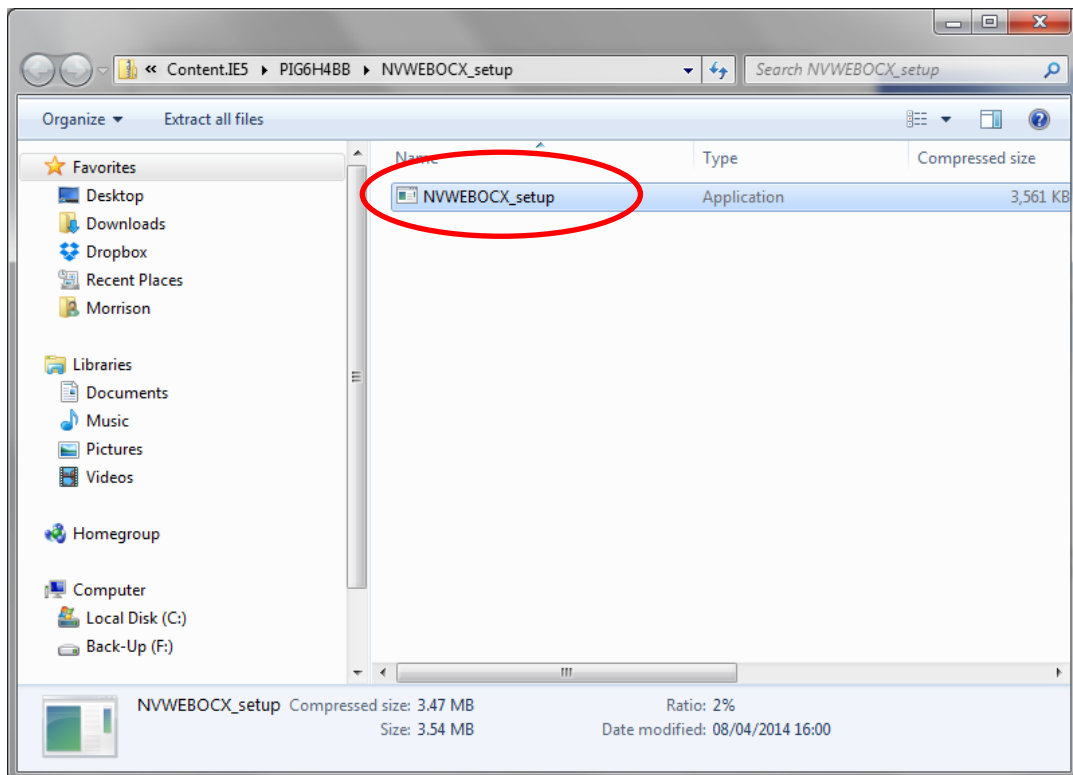


This should then begin the download. When the download completes a message box should appear as shown here:

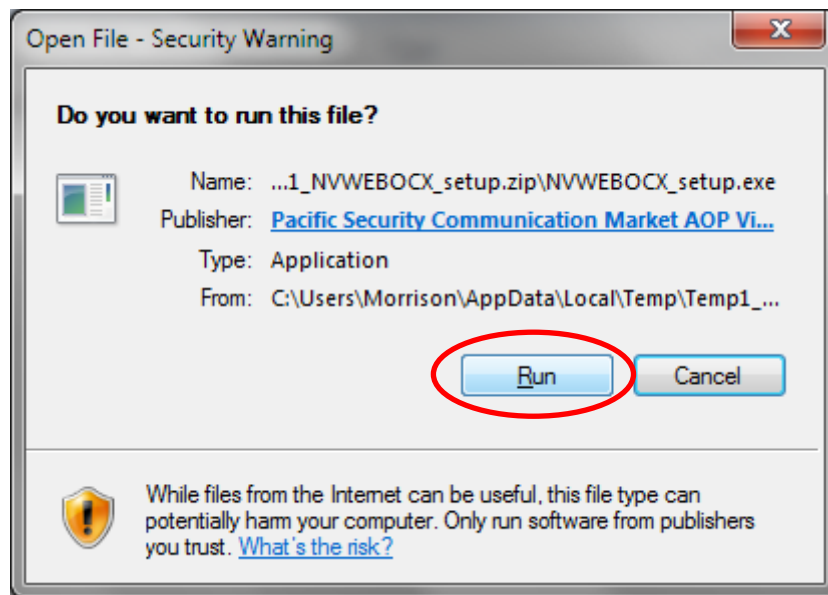


Click the "Open" button.

3. In the window which should appear double-click "NVWEBOCX_setup"

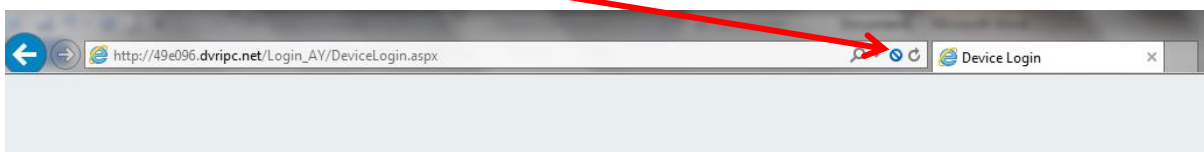


- Click "Run" in the box which appears:

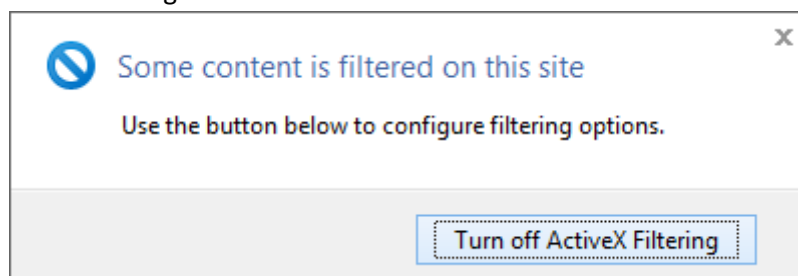


Followed by "Yes" if a security warning appears.

- To install the file, click "OK" -> followed by "NEXT" -> followed by "INSTALL". It will ask you to close Internet Explorer at this point, close Internet Explorer before clicking "Next". Then click "Finish"
- Open internet explorer and type "49e096.dvripc.net" into the address bar again followed by ENTER. Depending on the version of Internet Explorer being used, the previous message may reappear, this is because the newly installed program is being blocked. If the message does reappear click "CANCEL" this time. It is necessary to unblock this program, do this by clicking the following icon



Click "Turn off ActiveX Filtering" as below:



- A few messages may pop-up regarding windows firewall and/or ActiveX Controls, if any messages do appear click the allow access or similar button.

8. At this point it is necessary to close Internet Explorer (all open windows). Reopen Internet Explorer and type “49e096.dvripc.net” into the address bar again, followed by ENTER. No message should appear this time.

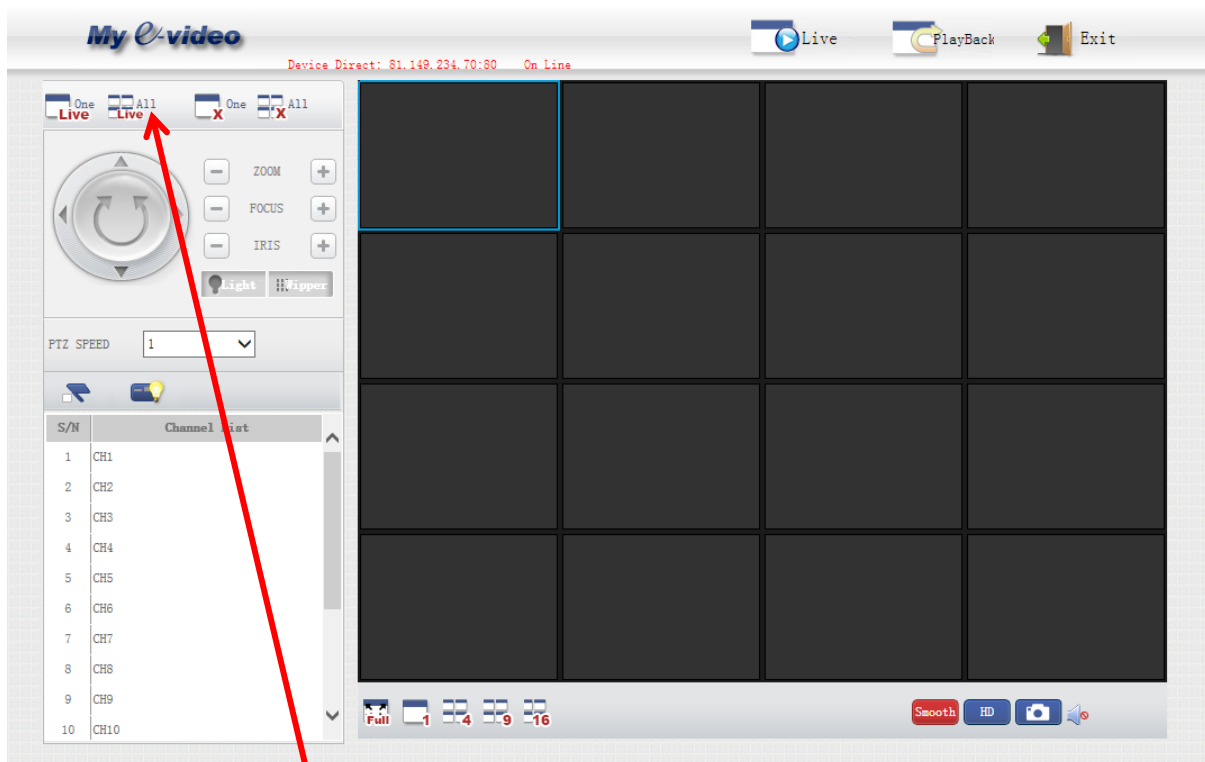
9. You should now be able to log in using the following username and password:

Username: admin

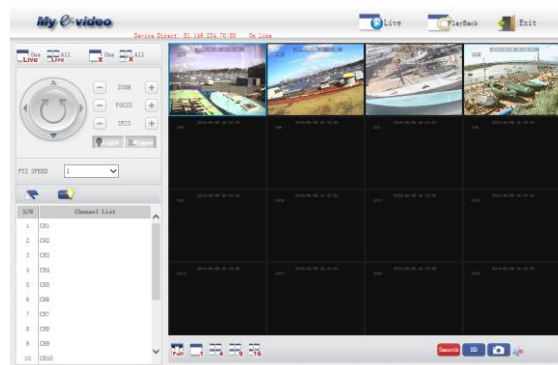
Password: 123456

Ensure that the “P2P Connect” box is checked before clicking “Device Login”

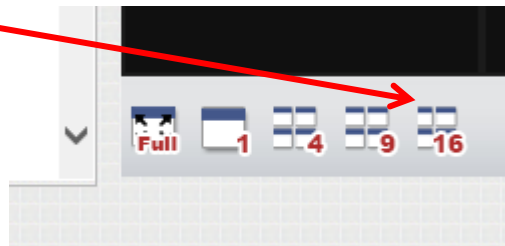
10. All going well, you should be presented with a page which looks like this:



11. If you click this button, and give it a short time to load (took 30 seconds or so on test PC) a preview should show all connected CCTV cams, as below:



You can double click a video to expand it. Click this button at the bottom to return to the overview screen:



Note: The website seems to be quite delicate at times, and if you click too much too quickly it seems to crash quite a lot, so patience is key. It also doesn't seem possible to rewind and view recorded video at the moment, although I think this may be down to a configuration issue.